

Applications up 8 per cent

Planning applications

In the June quarter 2010, authorities undertaking district level planning in England received 127,100 applications for planning permission. This represents an increase of 8 per cent compared with the corresponding quarter in 2009.

In the year ending June 2010, authorities received 475,500 applications, a slight increase on the year ending June 2009 figure of 475,400 applications.

Planning decisions

District level planning authorities decided 112,400 planning applications in the June quarter 2010, 7 per cent higher than in the same quarter last year. Seven regions and the National Park authorities saw an increase in the number of applications decided compared to the June quarter 2009, whilst the number fell in Yorkshire and the Humber (by 1 per cent) and remained unchanged in the North East. The largest increases were in

London (14 per cent) and the South East (12 per cent).

In the year ending June 2010, 425,300 applications were decided, a decrease of 5 per cent compared with the corresponding period a year ago. All regions saw a decrease in the number of applications determined compared to the year ending June 2009. The largest decreases were in Yorkshire and the Humber (11 per cent) and the North East (10 per cent).

Applications granted

86 per cent of all decisions in the June quarter 2010 were granted, an increase of 2 percentage points when compared with the June quarter 2009. Approval rates across the regions ranged from 79 per cent in London to 94 per cent in the North East. These percentages represent a 3 per cent increase for authorities in London when compared with the same quarter a year ago.

In the year ending June 2010, 85 per cent of all decisions were granted, an increase of 2 percentage points when compared with the year ending June 2009. Approval rates across the regions ranged from 79 per cent in London to 93 per cent in the North East. These percentages represent a 3 percentage point increase in the approval rate for authorities in London compared to the year ending June 2009.

Speed of applications

In the June quarter 2010, 70 per cent of major applications were processed within 13 weeks compared with 71 per cent in the June 2009 quarter. Also, 78 per cent of minor applications and 88 per cent of other applications were processed within 8 weeks.

In the year ending June 2010, 71 per cent of major applications were processed within 13 weeks. Also, 78 per cent of minor applications and 88 per cent of other applications were processed within 8 weeks.

In the quarter ending June 2010, district level planning authorities decided 63 per cent of large-scale major applications, and 72 per cent of small-scale major applications within 13 weeks.

In the year ending June 2010, district level planning authorities decided 62 per cent of large-scale major applications, and 73 per cent of small-scale major applications within 13 weeks.

Residential decisions

Decisions on all applications for residential

Planning Decisions on Major and Minor residential development (DCLG new Table 8[YE])

Year ending 30 June 2010

London Boroughs	Total residential Major decisions	Number granted	% granted within 13 weeks	% over 13 weeks	Total Minor residential decisions	Number granted	% granted	% within 8 weeks	% over 8 weeks	
London	615	423	69	64	36	7763	4798	62	76	24
Barking and Dagenham	2	1	50	50	50	87	38	44	64	36
Barnet	32	26	81	88	13	389	220	57	87	13
Bexley	10	5	50	60	40	85	38	45	76	24
Brent	34	26	76	73	27	188	78	41	83	17
Bromley	27	17	63	67	33	313	171	55	68	32
Camden	13	8	62	100	-	557	468	84	71	29
City of London	1	1	100	100	-	8	8	100	75	25
Croydon	42	18	43	64	36	370	195	53	75	25
Ealing	34	20	59	44	56	180	104	58	76	24
Enfield	11	6	55	18	82	298	123	41	85	15
Greenwich	18	11	61	61	39	71	47	66	54	46
Hackney	26	23	88	65	35	287	179	62	83	17
Hammersmith and Fulham	-	-	-	-	-	-	-	-	-	-
Haringey	11	9	82	55	45	200	111	56	75	25
Harrow	14	10	71	50	50	244	108	44	72	28
Havering	13	9	69	62	38	169	96	57	76	24
Hillingdon	20	13	65	80	20	217	98	45	73	27
Hounslow	4	2	50	75	25	138	56	41	72	28
Islington	17	12	71	47	53	251	183	73	71	29
Kensington and Chelsea	2	2	100	-	100	530	444	84	85	15
Kingston upon Thames	4	1	25	50	50	123	51	41	57	43
Lambeth	39	24	62	97	3	369	156	42	93	7
Lewisham	26	18	69	65	35	200	140	70	67	34
L Thames Gateway	14	13	93	25	75	-	-	-	-	-
Merton	7	4	57	57	43	173	78	45	69	31
Newham	5	4	80	100	-	88	45	51	91	9
Redbridge	9	3	33	78	22	114	22	19	71	29
Richmond upon Thames	8	5	63	38	63	146	84	58	57	43
Southwark	47	35	74	70	30	340	242	71	80	20
Sutton	11	10	91	55	45	118	60	51	81	19
Tower Hamlets	-	-	-	-	-	-	-	-	-	-
Waltham Forest	-	-	-	-	-	-	-	-	-	-
Wandsworth	22	16	73	59	41	647	545	84	76	24
Westminster	15	14	93	53	47	326	270	83	64	36

Source: Source: DCLG (www.communities.gov.uk)

... incomplete data

Planning Decisions, by development type and speed of decision (DCLG new Table 7[YE]) Year ending 30 June 2010

London Boroughs	Total major decisions				Total minor decisions				Total other decisions				
	Total major decisions	Number granted	Percentage granted	% within 13 weeks	Total minor decisions	Number granted	Percentage granted	% within 8 weeks	% over 8 weeks	Total other decisions	Number granted	Percentage granted	% within 8 weeks
London	1,469	1,124	77	70	20,632	15,857	77	79	21	48,926	30,825	80	88
Barking and Dagenham	10	9	90	80	224	157	70	79	21	442	304	81	90
Barnet	67	53	79	82	909	699	77	90	10	2,706	1,618	83	93
Besley	22	16	73	77	373	286	77	83	17	1,191	864	84	94
Brent	45	37	82	70	507	357	70	85	15	1,818	994	77	90
Bromley	103	74	72	82	757	552	73	72	28	2,402	1,628	81	86
Camden	47	34	72	87	996	859	86	73	27	1,789	1,087	83	81
City of London	12	12	100	25	229	222	97	85	15	261	257	98	85
Croydon	57	30	53	63	966	715	74	76	24	1,668	1,022	79	88
Ealing	66	47	71	58	614	470	77	79	21	2,233	1,145	75	89
Enfield	21	16	76	33	606	374	62	83	17	1,511	844	74	94
Greenwich	59	42	71	73	490	433	88	82	18	990	599	75	87
Hackney	55	49	89	69	655	491	75	80	20	758	417	72	89
Hammersmith and Fulham	-	-	-	-	-	-	-	-	-	-	-	-	-
Haringey	20	17	85	65	375	263	70	77	23	1,329	848	80	85
Harrow	40	33	83	55	472	286	61	71	29	1,715	933	74	90
Havering	29	23	79	64	410	298	73	77	23	1,349	935	81	92
Hillingdon	62	48	77	74	480	322	67	75	25	1,764	897	68	92
Hounslow	43	35	81	53	362	243	67	75	25	1,828	964	73	85
Islington	48	34	71	60	747	598	80	80	20	1,128	826	82	88
Kensington and Chelsea	15	14	93	60	912	777	85	85	15	1,696	1,289	85	88
Kingston upon Thames	17	13	76	65	341	227	67	63	37	1,184	683	75	87
Lambeth	76	51	67	95	814	485	60	91	9	1,190	606	69	95
Lewisham	35	25	71	66	914	811	89	83	17	698	414	82	83
London Thames Gateway UDC	26	25	96	44	8	8	100	75	25	6	6	100	50
Merton	40	32	80	83	341	223	65	74	26	1,371	769	78	90
Newham	40	37	93	92	403	280	69	93	7	675	344	68	97
Redbridge	33	20	61	70	399	228	57	71	29	2,070	1,052	70	87
Richmond upon Thames	27	20	74	63	817	672	82	75	25	2,412	1,461	83	89
Southwark	73	54	74	72	731	557	76	78	22	819	453	72	89
Sutton	25	22	88	68	289	217	75	84	16	994	610	79	87
Tower Hamlets	-	-	-	-	-	-	-	-	-	-	-	-	-
Waltham Forest	-	-	-	-	-	-	-	-	-	-	-	-	-
Wandsworth	37	29	78	62	924	789	85	78	22	1,885	1,420	91	90
Westminster	76	65	86	72	2,198	1,904	87	74	26	4,199	3,537	87	81

Source: Source: DCLG (www.communities.gov.uk)

...incomplete data

developments increased from 12,100 in the June quarter 2009 to 12,800 in the June quarter 2010, an increase of 6 per cent. Major residential development increased by around 9 per cent compared to the June quarter 2009.

The number of residential developments decided decreased by 13 per cent from 57,400 in the year ending June 2009 to 50,100 in the year ending June 2010.

In the June quarter 2010, authorities granted 78 per cent of major residential applications and determined 64 per cent of them within 13 weeks. 71 per cent of decisions on minor residential applications were granted and 72 per cent determined within 8 weeks.

In the year ending June 2010, authorities granted 77 per cent of major residential applications and determined 66 per cent of them within 13 weeks. 71 per cent of decisions on minor residential applications were granted and 73 per cent determined within 8 weeks. ■

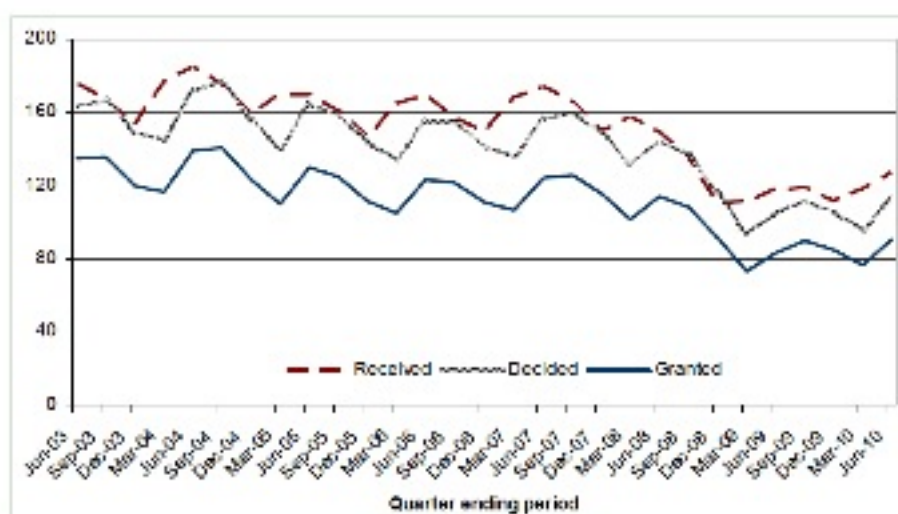


FIGURE: Number of planning applications received, decided and granted by district authorities